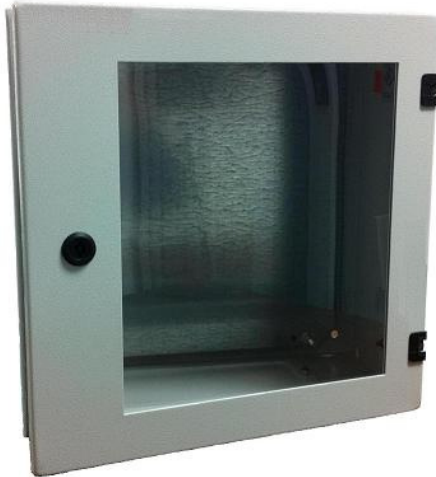


Window-Enclosures *and inner-doors*

- **Superior Quality**
- **Unique Features**
- **Global Listings**
- **Excellent Value**
- **In Stock**

SN wall-mount enclosures

- with window doors
- easy-install inner-doors available



Window

- UV-resistant Makrolon®
- Maintains NEMA 4 rating
- Maximum viewing area



International ratings

- IP 66 / NEMA 4

Surface finish

- Powder coated
(Epoxy-Polyester)
RAL 7035 texture
finish

hawa SN type wall mount enclosures w/ window-doors powder coated (Epoxy-Polyester) RAL 7035, texture finish

DON'T FIND THE SIZE YOU NEED? PLEASE CONTACT HAEWA FOR ANY MODIFICATION OR CUSTOMIZATION AT 1-800-783-4239	Size [inches]	Size [mm]	Order No. ⁽¹⁾	Mounting Plate		Usable Depth	Weight	
	H x W x D	H x W x D	incl. Mounting Plate	H x W				
	(nominal)	(exact)		in	mm	in / mm	lbs / kg	
Window Door Enclosures NEMA 4, 12, 13 / IP 66	<input type="checkbox"/> 16 x 16 x 8	400 x 400 x 200	0331-4040-20P17	14.57 x 13.50	370 x 343	7.09 / 180	20 / 9	✓
	24 x 16 x 6	600 x 400 x 150	0331-4060-15P17	22.44 x 13.50	570 x 343	4.13 / 105	26 / 12	✓
	<input type="checkbox"/> 24 x 16 x 8	600 x 400 x 200	0331-4060-20P17	22.44 x 13.50	570 x 343	7.09 / 180	28 / 13	✓
	<input type="checkbox"/> 24 x 16 x 12	600 x 400 x 300	0331-4060-30P17	22.44 x 13.50	570 x 343	11.02 / 280	32 / 14.5	✓
	<input type="checkbox"/> 24 x 24 x 8	600 x 600 x 200	0331-6060-20P17	22.44 x 21.38	570 x 543	7.09 / 180	46 / 21	✓
	<input type="checkbox"/> 24 x 24 x 14	600 x 600 x 350	0331-6060-35P17	22.44 x 21.38	570 x 543	13.00 / 330	54.5 / 25	✓
	<input type="checkbox"/> 24 x 24 x 20	600 x 600 x 500	0331-6060-50P17	22.44 x 21.38	570 x 543	18.90 / 480	64 / 29	✓
	<input type="checkbox"/> 32 x 24 x 8	800 x 600 x 200	0331-6080-20P17	30.31 x 21.38	770 x 543	7.09 / 180	59.5 / 27	✓
	<input type="checkbox"/> 32 x 24 x 12	800 x 600 x 300	0331-6080-30P17	30.31 x 21.38	770 x 542	11.02 / 280	65.5 / 30	
	<input type="checkbox"/> 32 x 24 x 16	800 x 600 x 420	0331-6080-42P17	30.31 x 21.38	770 x 542	15.75 / 400	77.5 / 35	

(1) Type SN enclosures with these order numbers include mounting plates; if mounting plate is not required, please order number ending in "-07"

with gland plate(s)

✓ UPS shippable

Inner Door Kits

- Field installable – no punching or drilling
- Right or left hinged
- Secured with quarter-turn latches
- 2mm / 14Ga steel panel, powder-coated
- approx. 40mm / 1.5" from door to inner-door

For Size [inches]	For Size [mm]	Order No. ⁽¹⁾	Inner Door		Weight
H x W x D	H x W x D	Inner Door + hardware	H x W		
(nominal)	(exact)		in	mm	lbs / kg
16 x 16 x 8	400 x 400 x 200	0331-4040-00-22	13.4 x 12.7	340 x 322	5 / 2.3
24 x 16 x 6	600 x 400 x 150	0331-4060-00-22	21.3 x 12.7	540 x 322	7 / 3.2
24 x 16 x 8	600 x 400 x 200	0331-4060-00-22	21.3 x 12.7	540 x 322	7 / 3.2
24 x 16 x 12	600 x 400 x 300	0331-4060-00-22	21.3 x 12.7	540 x 322	7 / 3.2
24 x 24 x 8	600 x 600 x 200	0331-6060-00-22	21.3 x 20.5	540 x 522	11 / 5
24 x 24 x 14	600 x 600 x 350	0331-6060-00-22	21.3 x 20.5	540 x 522	11 / 5
24 x 24 x 20	600 x 600 x 500	0331-6060-00-22	21.3 x 20.5	540 x 522	11 / 5
32 x 24 x 8	800 x 600 x 200	0331-6080-00-22	29.1 x 20.5	740 x 522	15 / 6.8
32 x 24 x 12	800 x 600 x 300	0331-6080-00-22	29.1 x 20.5	740 x 522	15 / 6.8
32 x 24 x 16	800 x 600 x 420	0331-6080-00-22	29.1 x 20.5	740 x 522	15 / 6.8

