

Upgrade to

Consoles

- **Superior Quality**
- **Unique Features**
- **Global Listings**
- **Excellent Value**
- **In Stock**

Surface finish

- Powder coated (Epoxy-Polyester)
RAL 7035 texture finish
- Stainless on request

Ground studs

- Ground connection on console, doors and mounting plate

Lock

- Latch lock double mandrel
(other types of locks and handles available)



Console top

- Opening struts on right side (on both sides for $W \geq 30''$)

Front door

- Front door opening angle 180° ; mounting of right or left side
- Two door design for 40" wide console

Seal

- Special foam seal
- In accordance with
- IP 55 / NEMA 12, 13

Cable entry plate

- Adjustable, accepts rubber clamps

Ergonomical design

- Ergonomically designed console assures optimum viewing and operation of control devices

Mounting plate

- Galvanized
- Mounted on rear side
- 2 different height positions available



häwa 0335 consoles powder coated (Epoxy-Polyester) RAL 7035, texture finish

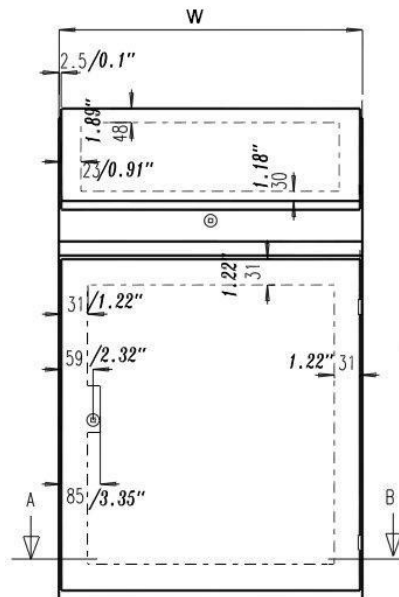
DONT FIND THE SIZE YOU NEED? PLEASE CONTACT HAEWA FOR ANY MODIFICATION OR CUSTOMIZATION AT 1-800-783-4239	Size [inches]	Size [mm]	Order No. ⁽¹⁾	Mounting Plate		Usable Depth	Weight
	H x W x D	H x W x D	incl. Mounting Plate	H x W		in / mm	lbs / kg
	(nominal)	(exact)		in	mm		
	38.5 x 20 x 19.5	977 x 500 x 492	0335-5010-49-17	31.5 x 17.84	800 x 453	13.8 / 350	88 / 40
NEMA 12, 13 / IP 55	38.5 x 24 x 19.5	977 x 600 x 492	0335-6010-49-17	31.5 x 21.77	800 x 553	13.8 / 350	101 / 46
	38.5 x 32 x 19.5	977 x 800 x 492	0335-8010-49-17	31.5 x 29.65	800 x 753	13.8 / 350	132 / 60
	38.5 x 40 x 19.5	977 x 1000 x 492	0335-1010-49-17 ⁽²⁾	31.5 x 37.01	800 x 940	13.8 / 350	152 / 69

(1) Type 0335 consoles with these order numbers include mounting plates; if mounting plate is not required, please order number ending in "-07"

(2) Two overlapping doors

Bases are available in heights of 100 mm (4") and 200 mm (8").

Other console shapes and stainless steel consoles are available on request. Please consult full-line catalog for further information.



Section A-B

