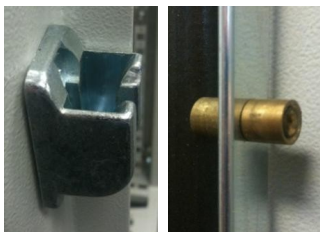


Free-standing Cabinets **for the electric & electronic industry**

- **Superior Quality**
- **Unique Features**
- **Global Listings**
- **Excellent Value**
- **In Stock**

Surface finish

- Powder coated
(Epoxy-Polyester)
RAL 7035 texture finish



Lock

- 4-point latch lock
- “Roll-in” mechanism for reliable & smooth operation

International ratings

- **IP 55 / NEMA 12**
(NEMA 4/4X on request)



Free-standing design

- Welded construction
- Welded side + back walls
- Flanged edges for rain gutter and prevent dust and water from entering the cabinet
- 4” and 8” bases available

Attachment brackets with “snap-in device” at top



Convenience hinges

- Robust metal hinges
- Tool-less lift-off design,
- Opening angle 120°

Seal

- Seamless foamed-in-place gasket

Safe and convenient mounting plate installation



Plastic sliders on rails for easy movement at bottom



US-Stocked Sizes!

hawa 0390 free-standing cabinets
 powder coated (Epoxy-Polyester) RAL 7035, texture finish

DONT FIND THE SIZE YOU NEED? PLEASE CONTACT HAEWA FOR ANY MODIFICATION OR CUSTOMIZATION AT 1-800-783-4239	Size [inches]	Size [mm]	Order No. ⁽¹⁾	Mounting Plate		Usable Depth	Weight	
	H x W x D	H x W x D	incl. Mounting Plate	H x W		in / mm	lbs / kg	
	(nominal)	(exact)		in	mm			
16" deep NEMA 12, 13 / IP 55 (NEMA 4 / IP 66 on request)	63 x 24 x 16	1600 x 600 x 400	0390-6016-40-17	58.27 x 20.31	1480 x 516	13.98 / 355	84 / 186	
	63 x 32 x 16	1600 x 800 x 400	0390-8016-40-17	58.27 x 28.19	1480 x 716	13.98 / 355	230 / 104	
	71 x 24 x 16	1800 x 600 x 400	0390-6018-40-17	66.14 x 20.31	1680 x 516	13.98 / 355	203 / 92	
	71 x 32 x 16	1800 x 800 x 400	0390-8018-40-17	66.14 x 28.19	1680 x 716	13.98 / 355	252 / 114	
	71 x 40 x 16	1800 x 1000 x 400	0390-1018-40-17	66.14 x 36.06	1680 x 916	13.98 / 355	314 / 142	
	71 x 48 x 16	1800 x 1200 x 400	0390-1218-40-17 ⁽²⁾	66.14 x 43.94	1680 x 1116	13.98 / 355	375 / 170	
	71 x 63 x 16	1800 x 1600 x 400	0390-1618-40-17 ⁽³⁾	66.14 x 59.69	1680 x 1516	13.98 / 355	503 / 228	
	71 x 79 x 16	1800 x 2000 x 400	0390-2018-40-17 ⁽³⁾	66.14 x 75.43	1680 x 1916	13.98 / 355	605 / 274	
	79 x 24 x 16	2000 x 600 x 400	0390-6020-40-17	74.02 x 20.31	1880 x 516	13.98 / 355	223 / 101	
	79 x 32 x 16	2000 x 800 x 400	0390-8020-40-17	74.02 x 28.19	1880 x 716	13.98 / 355	274 / 124	
	79 x 40 x 16	2000 x 1000 x 400	0390-1020-40-17	74.02 x 36.06	1880 x 916	13.98 / 355	342 / 155	
	79 x 48 x 16	2000 x 1200 x 400	0390-1220-40-17 ⁽²⁾	74.02 x 43.94	1880 x 1116	13.98 / 355	415 / 188	
	79 x 63 x 16	2000 x 1600 x 400	0390-1620-40-17 ⁽³⁾	74.02 x 59.69	1880 x 1516	13.98 / 355	547 / 248	
	79 x 79 x 16	2000 x 2000 x 400	0390-2020-40-17 ⁽³⁾	74.02 x 75.43	1880 x 1916	13.98 / 355	660 / 299	
	24" deep NEMA 12, 13 / IP 55 (NEMA 4 / IP 66 on request)	71 x 24 x 24	1800 x 600 x 600	0390-6018-60-17	66.14 x 20.31	1680 x 516	21.85 / 555	234 / 106
		71 x 32 x 24	1800 x 800 x 600	0390-8018-60-17	66.14 x 28.19	1680 x 716	21.85 / 555	283 / 128
71 x 40 x 24		1800 x 1000 x 600	0390-1018-60-17	66.14 x 36.06	1680 x 916	21.85 / 555	331 / 150	
71 x 48 x 24		1800 x 1200 x 600	0390-1218-60-17 ⁽²⁾	66.14 x 43.94	1680 x 1116	21.85 / 555	380 / 172	
79 x 24 x 24		2000 x 600 x 600	0390-6020-60-17	74.02 x 20.31	1880 x 516	21.85 / 555	254 / 115	
79 x 32 x 24		2000 x 800 x 600	0390-8020-60-17	74.02 x 28.19	1880 x 716	21.85 / 555	309 / 140	
79 x 40 x 24		2000 x 1000 x 600	0390-1020-60-17	74.02 x 36.06	1880 x 916	21.85 / 555	362 / 164	
79 x 48 x 24		2000 x 1200 x 600	0390-1220-60-17 ⁽²⁾	74.02 x 43.94	1880 x 1116	21.85 / 555	415 / 188	

(1) Type 0390 cabinets with these order numbers include mounting plates; if mounting plate is not required, please order number ending in "-07"

(2) Two overlapping doors

(3) Two doors with removable center post

Bases for above cabinets

Mild steel, powder coated (Epoxy-Polyester) RAL 7022, texture finish

4" / 100 mm high

Part number: **0396-WW01-DD-17**

with

WW = 60

for width of

24" / 600 mm

8" / 200 mm high

Part number: **0396-WW02-DD-17**

WW = 80

for width of

32" / 800 mm

WW = 10

for width of

40" / 1000 mm

WW = 12

for width of

48" / 1200 mm

WW = 16

for width of

63" / 1600 mm

WW = 20

for width of

79" / 2000 mm

and

DD = 41

for depth of

16" / 400 mm

DD = 51

for depth of

20" / 500 mm

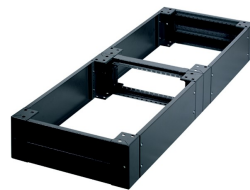
DD = 61

for depth of

24" / 600 mm



Sample base 4" high x 32" wide x 20" deep



Sample base 8" high x 63" wide x 16" deep (incl. optional base cross-bar)