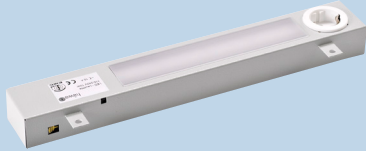


# LED-Lamp with reflex light barrier

## LED-lamp with reflex light barrier



### Key features

- Sensor-controlled ON/OFF function through reflex light barrier
- Wide-range voltage
- Daisy chaining
- Long service life and maintenance-free
- Energy-saving by LED technology
- Quick connection through snap lock
- Male and female connector inside the cabinet

### Product description

The LED lamps are designed for the use in cabinets and enclosures equipped with electric/electronic components, especially where space is at a premium. These lamps have a very long service life thanks to the use of LED technology. Both power input and output connectors snap lock into their sockets. With the integrated power unit and the plugs, the lamps can be connected quickly. It is possible to connect up to 10 lamps to each other (cascading).

### Technical data

- Operating voltage: AC 100-240V, 50/60 Hz (min. AC 90V, max. AC 264V)
- Surface: powder coated sheet steel housing RAL 7035, texture finish

- Luminosity: 1200 Lm at 120°
- Switch: Reflex light barrier
- Power consumption: max. 10 W
- Lamp type: LED, radiation angle 120°
- Color temperature = 5,000 K
- Connection: 3-pole connector with snap lock
- Mounting: max. 10 pcs.
- Operating temperature: from -15 °C to +45 °C
- Storage temperature: from -25 °C to +60 °C
- Protection class: IP20
- Weight: 0.8 kg
- Fixing type: attaches with M5 screws
- Dimensions: 440 x 65 x 42mm (L x W x H)
- Service life: 60,000 h at + 20°C (+68°F)
- Approvals: CE, VDE-EMV

### Scope of delivery:

- 1 piece

### Note

Suitable for 600, 800, 1000 and 1200 mm hawa cabinets as well as for products from other manufacturers equipped with attachment holes in a 25 mm grid.

We recommend to install the lamps after installation of the mounting plate.

Shockproof socket 16A	Order number
Yes	<b>3080-7041-14-17</b>
No	<b>3080-7041-14-07</b>

## Accessories

### Power cable and extension cable

#### Product description

For fluorescent and Linestra lamps

- Extension cable: 1 piece mounted male and female connector

#### Scope of delivery

- Power cable: 1 piece with mounted female connector

Length		Order number	
mm	inch	Power cable	Extension cable
3.000	118,11	<b>3080-9042-25-73</b>	
700	27,56		<b>3080-9042-05-73</b>
1.200	47,24		<b>3080-9042-10-73</b>

### Mounting kit

#### Product description

The mounting kit is required for mounting lamps to the lateral cabinet strut.

#### Scope of delivery

- Cover plate and mounting hardware

Order number
<b>3080-7006-12-07</b>



häwa GmbH  
 Industriestraße 12  
 D 88489 Wain  
 Tel. +49 7353 98460  
 Fax +49 7353 1050  
 info@haewa.de  
 www.haewa.de

**D 08451 Crimmitschau**

Sachsenweg 3  
 Tel. +49 3762 95271/2  
 Fax +49 3762 95278  
 vertrieb.c@haewa.de

**D 47167 Duisburg**

Gewerbegebiet Neumühl  
 Theodor-Heuss-Str. 128  
 Tel. +49 203 346530  
 Fax +49 203 589785  
 vertrieb.d@haewa.de

**D 63477 Maintal**  
 Dörnigheim

Carl-Zeiss-Straße 7  
 Tel. +49 6181 493031  
 Fax +49 6181 494003  
 vertrieb.rm@haewa.de

**A 4020 Linz**

Schmachtl GmbH  
 Pummererstraße 36  
 Tel. +43 732 76460  
 Fax: +43 732 785036  
 office.linz@schmachtl.at

**CH 8967 Widen**

häwa (Schweiz) ag  
 Gyrenstrasse 5a  
 Tel. +41 43 3662222  
 Fax +41 43 3662233  
 info@haewa.ch

**DK 6400 Sonderborg**

Eegholm A/S  
 Grundtvigs Allé 165 - 169  
 Tel. +45 73 121212  
 Fax: +4573 121213  
 eegholm@eegholm.dk

**E 48450 Etxebarri**

haweia ibérica, s.l.  
 Poligono Leguizamón  
 Calle Guipuzcoa, Pab.9  
 Tel. +34 944 269521  
 Fax: +34 944 261087  
 haweia@ctv.es

**F 67140 Eichhoffen**

häwa France Sarl  
 8 B Rue des Industries  
 Tel. +33 3 88088880  
 Fax: +33 3 88088859  
 info@haewa.fr

**I 88489 Wain**

häwa Italia  
 Industriestraße 12  
 Tel. +49 7353 9846115  
 Fax +49 7353 1050  
 info@haewa.it

**NL 7500 AC Enschede**

häwa Nederland B.V.  
 Postbus 136  
 Tel. +31 53 4321835  
 Fax +31 53 4303414  
 info@haewa.nl

**SE 88489 Wain**

häwa Schweden  
 Industriestraße 12  
 Tel. +49 7353 98460  
 Fax +49 7353 1050  
 info@haewa.se

**SE 192 79 Sollentua**  
 (only for tools)

Nelco Contact AB  
 Bergkällvägen 29  
 Tel. + 46 8 7547040  
 Fax +46 8 7548051  
 info@nelco.se

**USA Duluth, GA 30097**

haewa Corporation  
 3764 Peachtree Crest Drive  
 Tel. +1 770 9213272  
 Fax +1 770 9212896  
 info@haewa.com

**RUS 88489 Wain**

häwa Russland  
 Industriestraße 12  
 Tel. +49 7353 9846 169  
 Fax +49 7353 1050  
 edgar.getz@haewa.de



SCHRANKSYSTEME



X-FRAME



GEHÄUSE



ZUBEHÖR



THERMOKOMPONENTEN



LEITUNGSKANÄLE



SONDERBAUTEN



WERKZEUGE