

häwa GmbH

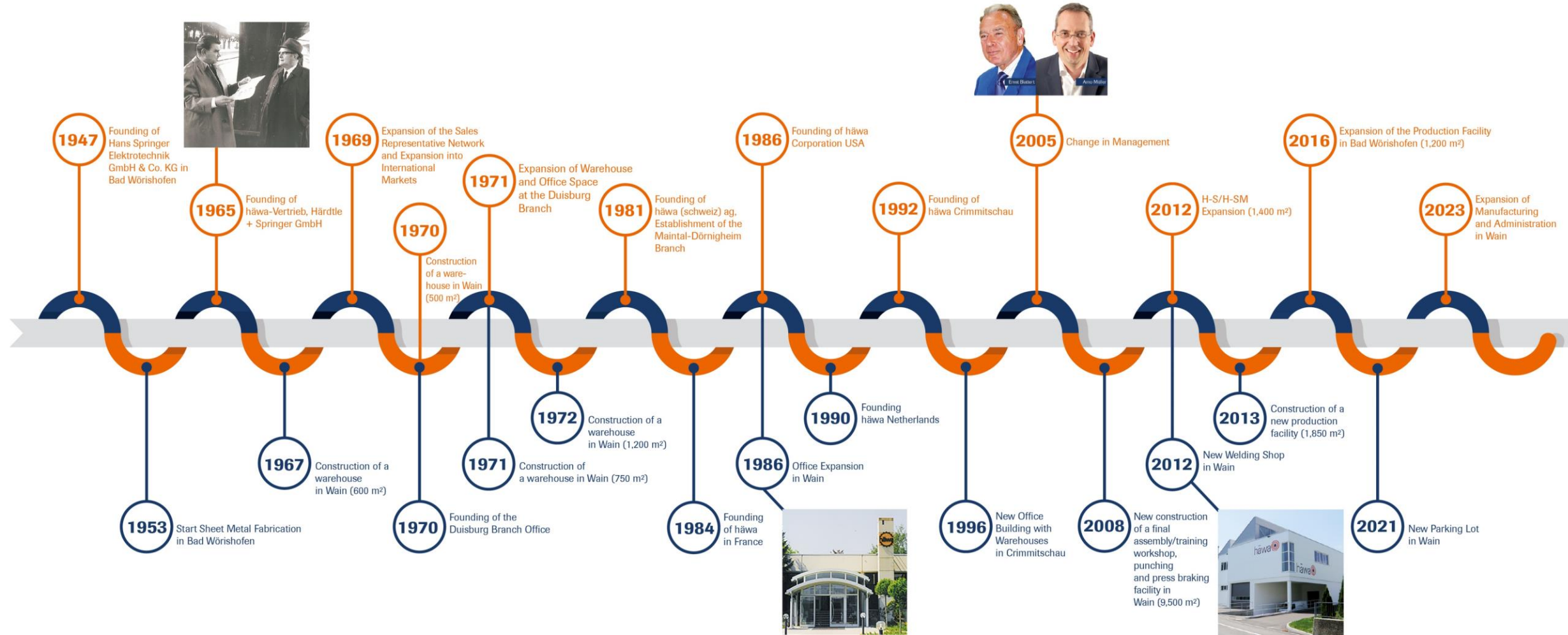
By far the best solution.



Agenda

- häwa at a Glance
- Locations and Customer Base
- Mission and Quality Commitment
- Products and Solutions
- Services Offered
- Environmental Management

häwa at a Glance – Our History



Our Locations

Headquarters and production sites in southern Germany (Wain, Bad Wörishofen)

Branch offices in Germany (Duisburg, Maintal, Crimmitschau)

Additional branch offices in Europe (France, the Netherlands, Switzerland)

One location in the U.S.



Our Customers

- Mechanical and Plant Engineering
- Environmental Technology
- Electrical Engineering and Communications
- Defense Industry
- Infrastructure
- Energy and Mining
- Research and Development
- Chemicals and Pharmaceuticals
- Food Industry



*With a global team of about 450 dedicated employees,
we successfully carry out your projects.*

Our Mission

- We supply control cabinet and enclosure solutions worldwide for a variety of industries and for various technical applications.
- At any time and for any project, we offer you ideal and unique solutions that are precisely tailored to your requirements.

*Our shared goal
always in sight!*



Our Quality Commitment

- häwa's products and solutions ensure that your technical systems operate reliably at all times, worldwide.
- häwa is passionate about developing, manufacturing and improving innovative products and solutions to meet customer needs.

*Customer-Focused
Personal
Reliable
High-Quality Forward-
Thinking*





Our Product Portfolio

From Standard up to Customized

- We offer a wide range of standard **products** that you can choose from.
- You decide the degree of customization for your products.
- If you cannot find a product that is suitable for your application, we will develop the perfect **solution** for your specific requirements and applications.

Wide range of products

- Cabinet Systems
- Enclosures
- Climate Control
- Support Arm Systems
- Cable Ducts
- Accessories
- Tools for Control Cabinet Construction

*Wide variety of materials, sizes
and type ratings, UL certification,
extensive range of accessories*



Custom Product Solutions

For specific requirements, we develop customized solutions with a structure based on our product line. We also develop customized solutions for requirements that are not based on a base product.

- Cabinet Systems, Consoles
- Enclosure
- Air Conditioning
- X-frame Machine Frames
- Cobot Workstations



*Custom-made, single-piece production
to mass production*



Comprehensive Service
tailored to your needs.

- Planning and Design for Your Projects
- Product Testing and Quality Management
- Service and Installation
- Storage and Logistics

Design

- **Innovative Design:** Customized solutions that go beyond standard products.
- **In-house Development Department:** Expertise in control cabinet and enclosure solutions.
- **Customer-Focused Development:** Perfect solutions tailored to your needs.
- **Forward-Looking Concepts:** Creative and innovative solutions for your projects.



Product Testing

- **Comprehensive Testing:** häwa products are developed and manufactured in accordance with applicable guidelines and standards. If necessary, our products are additionally tested by notified bodies such as VDE or UL.
- **Collaboration with External Testing Laboratories:** Close cooperation with UL and other recognized bodies.
- **Project management as a service:** Support from concept up to final certification.
- The highest quality and safety standards for your products.



Service and Installation

We offer you first-class service and assembly work. Your bearing products will be quickly and promptly fitted with cutouts, drill holes, and mechanical components and delivered.

Speed: We respond immediately to your requests and deliver your custom-made products in the shortest possible time.

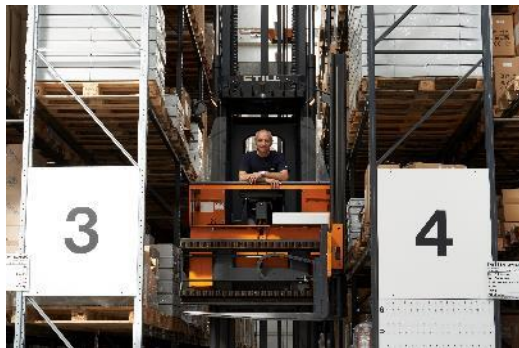
Flexibility: No matter what modifications you need—your requests will be carried out precisely.

Precision: Every modification is performed with the utmost accuracy.



Warehousing and Logistics

- **Reliable Shipping:** Professional and on-time delivery of your products.
- **Customs Management:** Handling of all customs formalities for export transactions.
- **Warehousing:** Flexible warehousing solutions for framework agreements and standard products.
- **Just-in-time deliveries:** Planning reliability through on-time delivery.
- **Professional handling:** An experienced team and a modern fleet of vehicles for safe loading and unloading.





Looking to the Future
Sustainability at häwa

X-frame



Sustainability at häwa

- häwa has been pursuing a sustainability strategy in the areas of energy and the environment for many years.
- This commitment to sustainability is reflected, among other things, in a certified energy management system in accordance with EN DIN 50001.
- Since the implementation of the EMS in 2014, sustainability has thus also become an integral part of häwa's corporate strategy.



Sustainability at häwa

- Under this globally applicable standard, we are driving efforts to reduce energy and resource consumption, and thereby also CO₂ emissions
- In doing so, we are also guided by the principles of the Paris Agreement on climate change and its 1.5-degree target
- To this end, we have developed an internal roadmap/transition plan toward climate neutrality, which aims to achieve net-zero CO₂ emissions by approximately 2045.

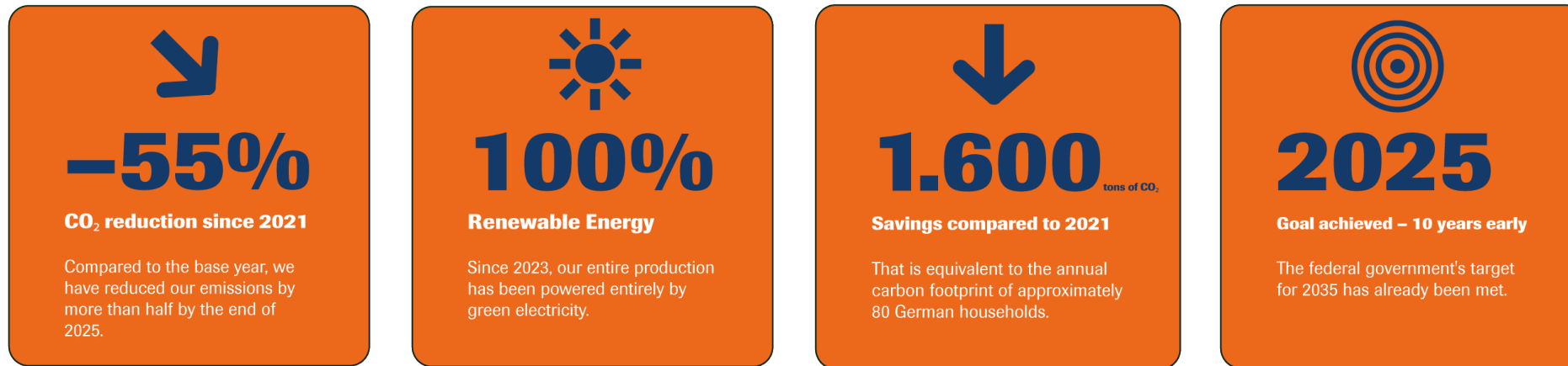


Milestones Already Achieved

- Switch to 100% certified green electricity
- Switch to renewable/carbon-neutral energy (solar PV)
- Switch to biogenic district heating from the neighboring Baur wood processing plant
- Add electric vehicles to the fleet
- Investments in energy-efficient systems (PBA) and buildings
- Renewable energy currently accounts for 42% of total energy consumption



10 Jahre Vorsprung beim Klimaschutz



With an annual CO₂ reduction of about 4%, we are consistently pursuing our path toward climate neutrality. We have already achieved over 55% of our reduction target—instead of the planned up to 17% by the end of 2025. This means that häwa is about 10 years ahead of its own roadmap.

Learn more at: www.haewa.com/haewa-co2



The best ideas come from
collaboration and trust!